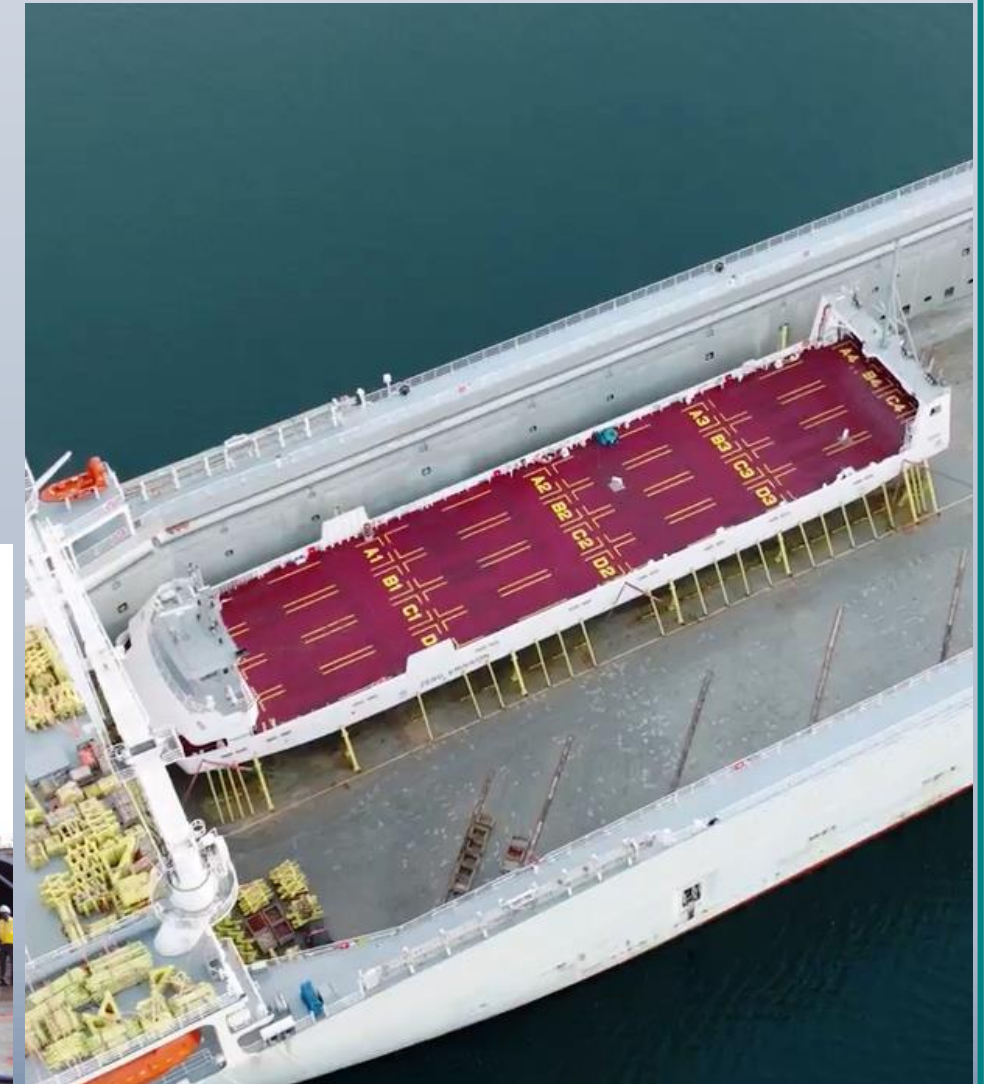


Project Cargo  
Transportation Studies  
and  
Sea-fastening Design



Zebec performs the complete Engineering Studies involved in the Transportation of Project Heavy Cargos. This includes but not limited to following analysis:-

- Hydrodynamic Analysis of Cargo Carrier for Estimating the Expected Accelerations During Voyage.
- Lashing Analysis to Design Optimum Sea Fastening Solutions
- Structural Design and Analysis of Foundation Stools and Stanchions
- Structural Analysis of Interface Structure of Cargo Carrier and Cargo with Lashings and Stools
- Stability Calculations of Cargo Carrier
- Engineering and Preparation of Plan for Float Over/ Lifting Operation for Cargo Transfer




# Zebec Marine Consultants & Services Pvt. Ltd.




- Ship Building Project Management
- Ship Design (Concept, Basic & Detailed)
- Oil & Gas Engineering
- FPSO | FSO | FSRU System Design
- Naval Architectural Services
- Retrofit Engineering (BWTS / Scrubbers)
- Ship Loadicator Software

 411-414, Raikar Chambers, Opp. Neelkanth Towers, Govandi-E, Mumbai-400088, India

 +91-22-42965000

 zebec@zebecmarine.com

 www.zebecmarine.com